

# MEGMEET

MEGMEET focuses on ESS and provides a one-stop solution for OEM, ODM, SKD, Non-Brand Standard energy storage system products with a powerful research and design platform, excellent supply chain platform, and lean production management platform.

## MEGMEET

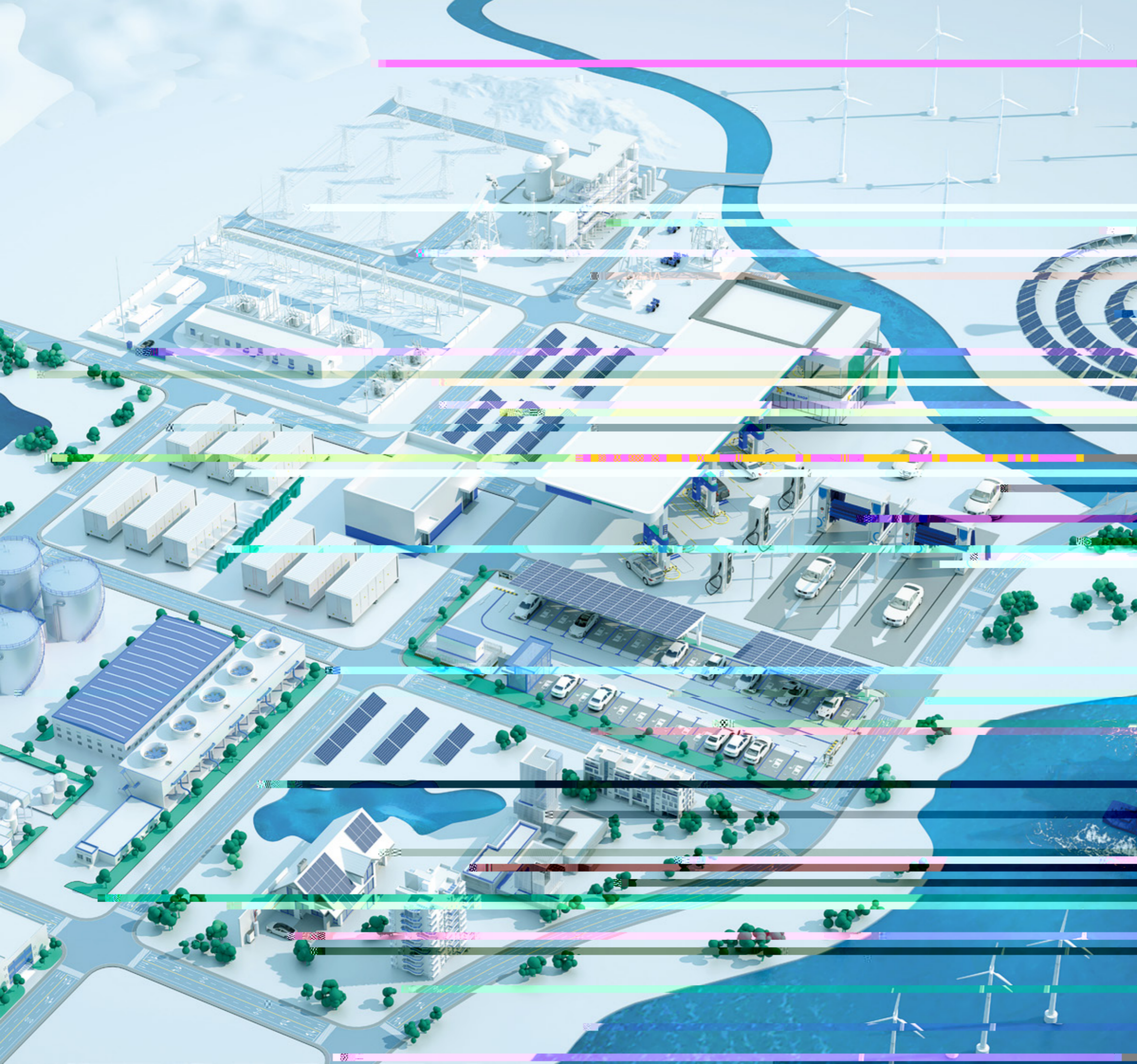
- PCS
  Inverter
  Air Conditioner
  Battery Pack
  CCS
- BMS
  EV Charger
  ESS
  Charging Module
- EMS
  CCU / TCU / PLC

en.megmeet.com  
info@megmeet.com

Version: 202508  
MEGMEET reserves the right to modify the technical parameters and appearance of the products in this catalogue without prior advice to the users.

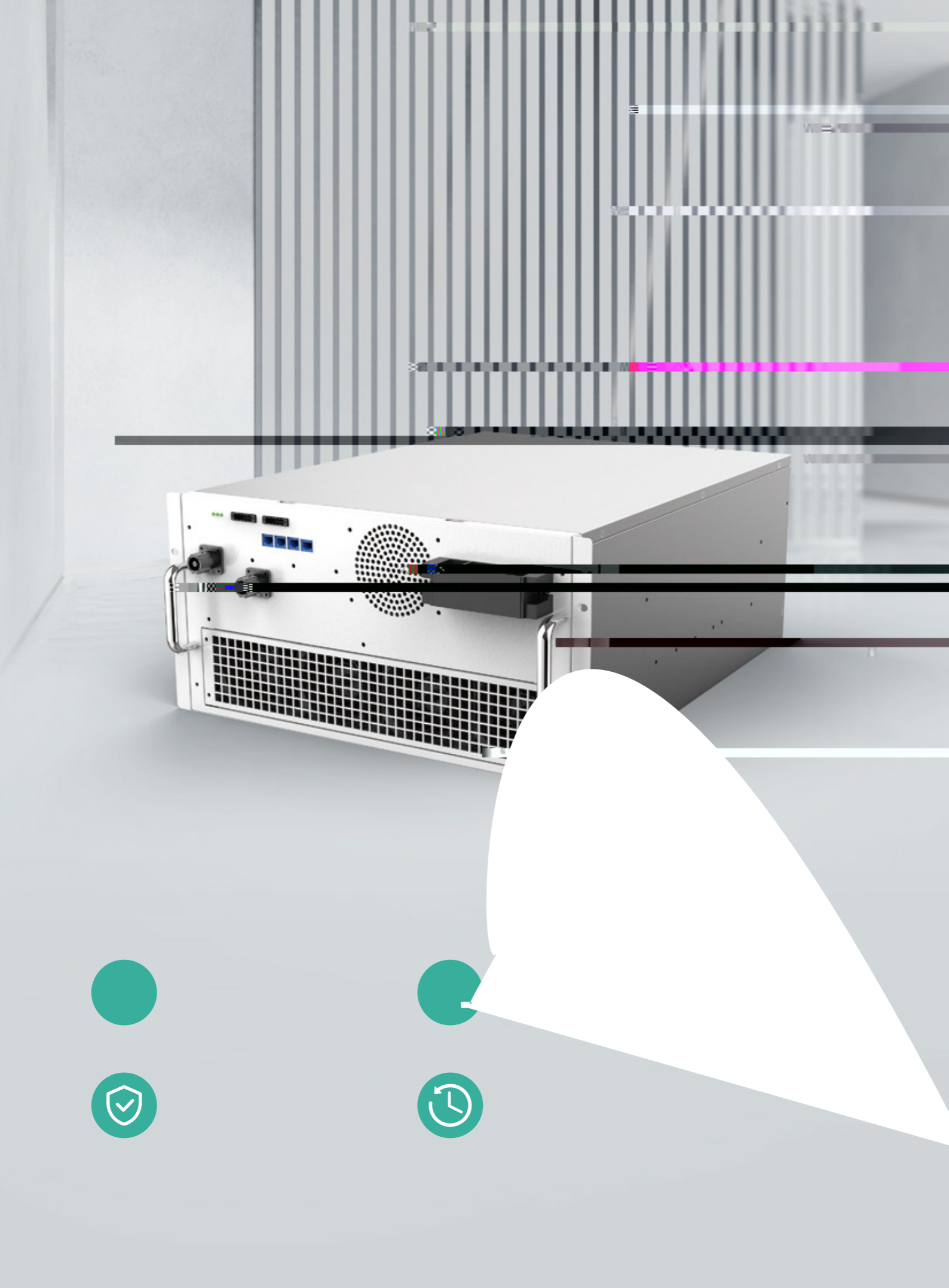
FOLLOW US





! Ü

01-06	PCS
07-08	Hybrid BESS 50 / 100 kWh
09-18	On-grid Solutions
19-20	Off-grid Solutions
21-26	Key Components
27-30	Battery System
31-32	High Voltage Box
33-34	Energy Storage Combiner Cabinet
35	R&D Capability
36-37	Manufacturing Capacity
38	About MEGMEET



– j ! r ~ ñ ! ñ é  
 = ã é ù ž @ ù é ã ù x



### Product Advantages



6 ù ã ñ ñ 8 ñ  
 Wide voltage range



j ã ã ù ! ù ñ ñ ã x v x ã ' ù ñ  
 Grid forming design



v ñ ù p ù ù j ù ñ ñ  
 High security design



x ù v x ã ñ y ù ñ ñ ù  
 Long lifetime and high reliability design

### Product Parameters

<b>! r ñ ù j ã ã ù ù</b>	
Number of Input Channels	1
Voltage Range / Rated DC Voltage	550 to 950 V / 768 V
Maximum DC Current	238 A
<b>~ ! r ñ ù j ã ã ù ù</b>	
Grid Voltage	400 (-15% to 10%) VAC
Off-grid Voltage	400 (± 10% adjustable)
Rated Capacity	125 kW
Rated Current	180.4 A
Continuous Overload Current	198.5 A
Maximum Current	216.5 A
AC Frequency	50 Hz (± 5% adjustable)
Total Harmonic Distortion Rate of Current / Total Harmonic Distortion Rate of Voltage	THDI ≤ 3% / ≤ 3%
Power Factor	PF 0.99 / -1 to 1
DC Component	0.50%
<b>, ñ ù ã ! x ñ ñ j ã ã ù ù</b>	
Allowable Relative Humidity	0 to 95% Rh (no condensation)
Allowable Altitude	4000 m
Operating Ambient Temperature	-25 °C to +60 °C
Storage Temperature	-40 °C to +70 °C
<b>j ù ñ j ã ã ù ù</b>	
Wiring	3L3P / 3L4P (IT / TT / TN-S)
Grid Form	IT / TN
Maximum Charging Conversion Efficiency	99%
Maximum Discharge Conversion Efficiency	99%
Cooling Method	Intelligent air cooling
IP Grade	IP55
Corrosion Resistance	C3
Noise Level	< 75 dB
Overvoltage Level	DC II, AC III
Dimensions (W x H x D)	520 x 250 x 880 (mm)
Weight	80 kg
DC Surge Protection	CLASS IV
AC Surge Protection	CLASS IV
Communication Interface	RS485, Ethernet, CAN, WIFI
Communication Protocol	Modbus TCP / RTU, CAN2.0, IEEE 802.22b / g / n

- j ! r Pñ ñx ! ñ é



### Product Advantages



V ñ ÜPÜ Üj ÜÑñ  
High security design



j Ä Ä Ü ! ÜÑñ Ä x V x Ä ' Ü ñ  
iabili ti !0p p P• 0p ð€ 1 Ðû! ‡ Á4P dPEt x r•Y ø½ hY Â Y •pA '•€ .İù6 ù7 ‡d•€g c.ð†!••8-p ð †u wWQ Xg• "z• p ñ1€€!0p ÷ 'h



XÜ V x Ä ñ yÜÑñ Ü  
Long lifetime and high reliability design

= ĩ ñ Ž, r r – – ĥ



## Product Advantages



= ĩ ĩ Ũ ĩ Ũ ĩ  
intelligent thermal management and efficient insulation to improve system efficiency



= ĩ ĩ Ũ Ũ ĩ  
100 kWh per cabinet, supports 4-way DC parallel operation and 10-way AC parallel operation, and can be expanded to a maximum of 4 Mwh



= ĩ ĩ ñ Ũ ĩ ĩ  
integrated design, all in one



= ĩ ĩ Ā ĩ  
all-in-one composite fire detection and efficient aerosol fire extinguishing

## Product Parameters

! @	
Max. PV Array Power @ STC	100 kWp
Max. DC Voltage	1000 V
MPPT Voltage Range	180 to 850 V
Max. DC Input Current	6 * 45 A
Number of MPPT	6
Number of Strings per MPPT	2
Ž Ā Ũ j Ā Ā Ũ Ũ	
Battery Type	LiFePO <sub>4</sub>
Rated Energy	104.5 kWh
Max. Charging / Discharging Current	150 A / 150 A
~ ! ^ ^ é ĩ	
Rated AC Power	50 kW
Max. Apparent Power	55 kVA
Rated Output Current @ 230 V	72.5 A
Max. Output Current @ 230 V	79.8 A
Rated AC Voltage	3+N+PE, 380 / 400 A
Rated Output Frequency / Range	50 Hz, 60 Hz / 45 to 55 Hz, 55 to 65 Hz
~ ! @ ^ é ĩ	
Rated AC Voltage / Range	3+N+PE, 380 V / 400 V
Rated Output Power	215 kW
Maximum Output Power	237 kW
Rated Operating Voltage	690 VAC / 3 W + PE
Rated Operating Current	180 A
Maximum Operating Current	198 A
Rated Frequency	50 / 60 Hz
Cell Type	Lithium Iron Phosphate (LFP)
Battery Specifications	314 Ah
Battery Cycle Life	> 8000 times (@ +25 °C, 0.5P, 80% EOL)
String Mode	1P416S
Rated Power	418 kWh
Rated Battery Voltage	1331 V
Operating Voltage Range	1123.2 to 1497.6 V
Thermal Management	Liquid cooling and heating
Fire Protection	Level 3 fire protection (perfluorohexanone)
Communication Interface	RS485 / CAN / LAN
Letter of Agreement	Modbus / CAN / MQTT
Range of Working Temperature	Charging: 0 °C to +55 °C Discharging: -20 °C to +55 °C
Relative Humidity	0 to 95% Rh (no condensation)
Altitude	≤ 4000 m (> 2000 Mderated)
Protection Level	IP55
Weight	≤ 4500 kg
Dimensions (W x H x D)	1400 x 2550 x 1350 (mm)



## Product Advantages



Multi-energy dispatch  
eni



, Ā nĀ, Ā n



m nĀ j n ^ Ū Ā n





Supports parallel connection of multiple equipments  
System hierarchical linkage protection  
Support elastic expansion and provide multiple solutions



Cabinet modular design  
Convenient maintenance and installation, integrated transportation  
Simple on-site construction

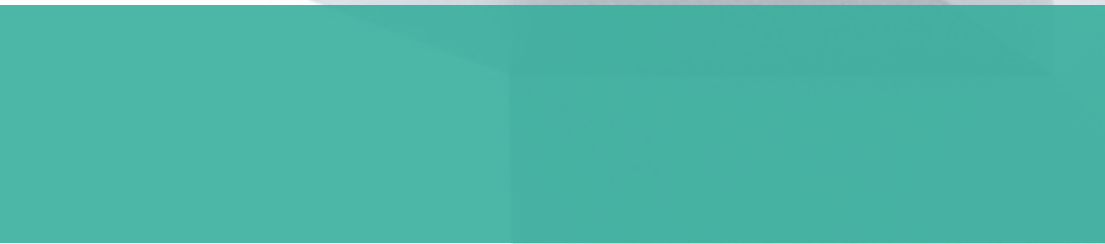


LFP cell  
High safety, long life



Suitable for all loads or AC power generation equipment

	Cluster 1#	Cluster 2#
Rated Output Power	125 kW	
Maximum Output Power	137 kW	
Rated Voltage	400 VAC / 3 W + N + PE	
Rated Current	180 A	
Maximum Current	209 A	
Rated Frequency	50 Hz	
Cell Type	Lithium Iron Phosphate (LFP)	
Cell Capacity	314 Ah	
Battery Cycle Life	> 8000 times (@ +25 °C, 0.5P, 80% EOL)	
Serial Method	1P240S	
Rated Capacity	241 kWh	
Rated Battery Voltage	768 V	
Voltage Range	648 to 876 V	
Thermal Management	Intelligent air cooling	
Fire Protection	Perfluorohexanone (Novec 1230)	
Communication Interface	Ethernet / RS485 / CAN	
Communication Protocol	Modbus / CAN / MQTT	
Temperature Range	Charging: 0 °C to +55 °C Discharging: -20 °C to +55 °C	
Relative Humidity	0 to 95% Rh (no condensation)	
Altitude	≤ 4000 m (> 2000 m derated)	
IP Grade	IP55	
Weight	≤ 2500 kg	
Dimensions (W x H x D)	1050 x 2500 x 1250 (mm)	



^ é ñ – – î  
Pñ ñ ! ñ é



### Product Advantages

6Ü ñ Ü~ ñÑ ñ  
Multifunctional dispatch,  
virtual power plants power  
demand-side response  
Peak-valley trading profit





# ŽV r PÜ Ü



## Applications

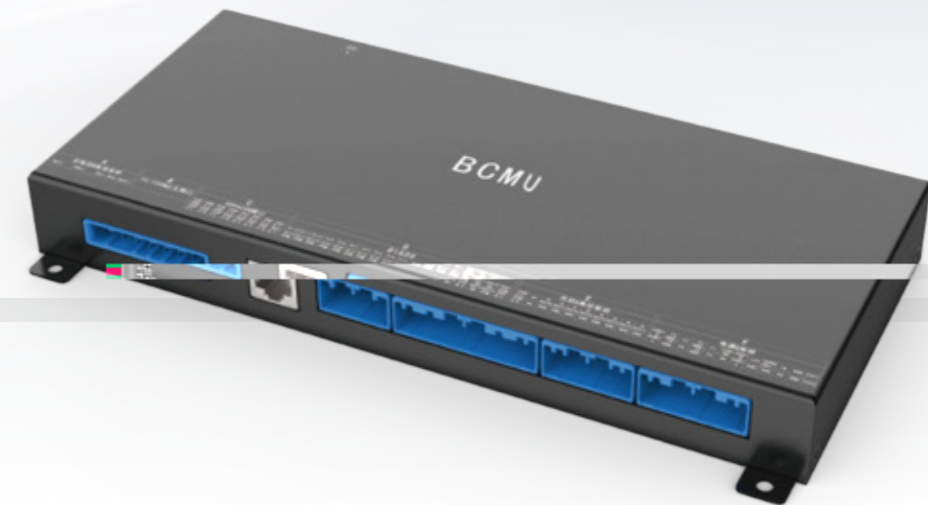
ŽÄ Ü ÄÑ Ä ÄéÜ Ü r ! @,rr Ä ×! Äñ Ü ,rr

- 6-52 string cell voltage and temp monitoring, sampling line disconnection detection
- Integrated AFE chip, sampling accuracy ( $\pm 1.5$  mV voltage &  $\pm 0.5$  temp)
- Bidirectional DC / DC active balancing; output constant current and voltage charge & discharge on battery
- $\pm 4$  A balancing current, meet 1500 V voltage platform
- Multiple communication interface, compatible with CAN2.0 & CANFD

## Product Parameters

Input voltage: — DC 16 to 32 V	Voltage sampling: — 6 to 52 S	Single unit detection: — 0 to 5 V ( $\pm 3$ mV)
Active balancing: — bidirectional 4A constant current	Operating temperature: — $-40$ °C to $+85$ °C	Temperature sampling: — 56 places
Temperature Detection range: — $-40$ °C to $+125$ °C	Communication interface: — 1 channel isolated CAN2.0/CANFD	

# ŽV r = × PÜ Ü



## Applications

ŽÄ Ü Ñ Ü Ä ÄéÜ Ü • ÄéÜÄ Ü Ü ! @,rr Ä ×! Äñ Ü ,rr

- Collect battery voltage, temp, insulation resistance data from BMU
- Manage battery cluster through SOX estimation, control battery cluster output, contactor on / off
- Connect to the switch via LAN for data interaction with BAMU
- External contactor, AC / DC circuit breaker, acoustooptic, fire control and switch status detection
- Communicate with PCS and external sensors to realize data interaction

## Product Parameters

Input Voltage: — 2 channels DC 16 to 32 V	Insulation Resistance Monitoring: — Accuracy $\pm 15\%$
Voltage Monitoring: — bidirectional 4 A constant current	8 Channels Active DO Output: — 2 A @ 30 V
12 Channels Isolated DI Input	4 Channels Passive DO Output: — 3 A @ 30 V-DC or 3 A @ 250 V-AC

# ŽV r × PÜ Ü



## Applications

## Product Features

Seconds of data retention

Edge computing, real-time diagnosis of battery safety & health status, equipment status inspection

Triple-network redundancy, with multi-interface centralized control capability

Micro-service architecture, support SDK secondary development

QT UI architecture, support OTA remote upgrade

Support overvoltage & undervoltage, overcurrent, differential pressure & temp protection, FDD, thermal control

## Product Parameter

— 3-Channels LAN

.. 12-Channels DI

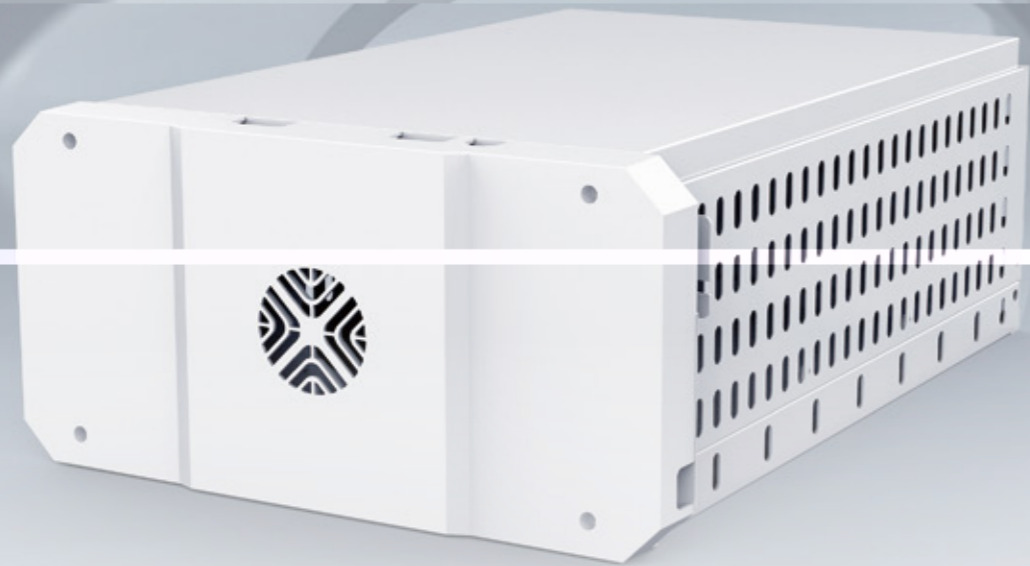
—

.. 500 g solid state drive, seconds of data retention



- Access to data from various components of ESS
- Demand control, anti-backflow control
- Access and control data on BMS, PCS, fire protection, air conditioning, temp & humidity sensor and lo interface
- Real time data monitoring
- Support redevelopment for cloud platform





## Product Parameters

Energy Capacity

14.336 kWh

1P16S

280 Ah

51.2 V

40 to 58.4 V

0.5P

0.5P

> 6000 times (@ +25 °C, 0.5 P, 80 % EOL)

Thermal Management

Thermal Management

Working T

Relative Humidity

Altitude

IP Grade

IP Grade

Total Weight

Dimensions (W x H x D)

# ŽĀ Ū j ~ ! N Pñ ĩx ! ~ ñ é



## Product Advantages



!! r @ Ūé Ā Ūx ' Ū ĩé  
CCS sampling  
High integration, collect voltage and temp data of each cell



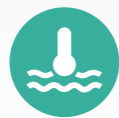
= ĩé! Ā ĩññ  
Compatible with 280 / 314 / 320 Ah battery cell  
Smoothly replaced and upgraded



= ĩé! r Ūñ ĩ  
PACK level fire protection



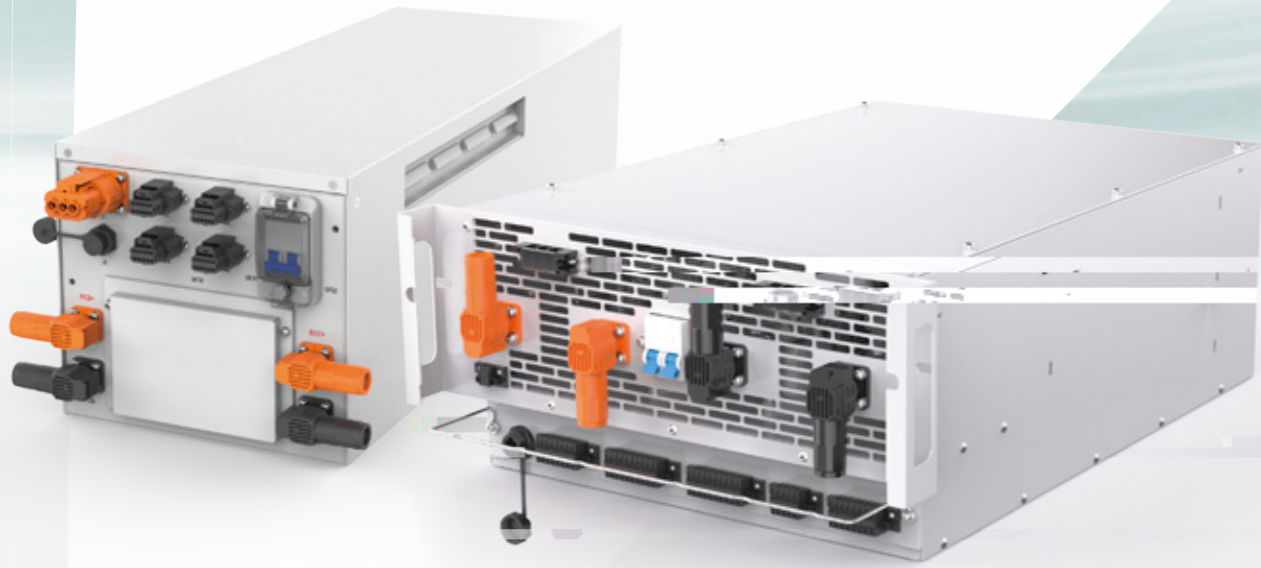
~ ññ ŪžĀ Ā ññ é  
Compatible with active & passive balancing  
The active balancing current can reach 4 A



Pñ ĩx ! ñ é  
Adopting smart liquid cooling system  
Module temperature difference  $\leq +2.5$  °C

## Product Parameters

, Ūñ ĩx j Ū ĩú	
Rated Energy	46.592 kWh
Battery Configuration	1P52S
Rated Capacity	280 Ah
Rated Voltage	166.4 V
Voltage Range	145.6 to 187.2 V
Standard Charging Current	140 A
Maximum Charging Current	160 A
Standard Discharge Current	140 A
Maximum Continuous Discharge Current	160 A
Battery Cycle Life	> 6000 times (@ +25 °C , 0.5 P, 80% EOL)
- ñ é , ñ Ū	
Thermal Management	Liquid cooling
Temperature Range	Charging: 0 °C to +55 °C Discharging: -20 °C to +55 °C
Storage Temperature	-20 °C to +45 °C (1 month) 0 °C to +35 °C (6 months)
Working Humidity	$\leq 95$ % Rh (No condensation)
Altitude	$\leq 3000$ m
r ñ Ū ~ ŪĀ Ā ñŪ	
IP Grade	IP67
Gross Weight	340 kg
Dimensions (W x H x D)	802 x 246 x 1160 (mm)



# , Ü é r Ñ é Ü ! İ ñ Ü ! Ñ ñ Ü



## Product Advantages



**Modular Design**  
Flexible and scalable on demand



**Safety & Intelligent Control**  
Central control and cabinet control management



**Intelligent Cloud Connection**  
Cloud Interconnection  
Real-time monitoring

## Combiner Cabinet for Air Cooling ESS Product Parameters

Rated Output Voltage	400 VAC
Rated Output Current	800 A (4 energy storage cabinets are equipped with a 800 A switch)
Rated Frequency	50 / 60 Hz
Input Current for Single ESS	200 A
Number of Input Channels	4 channels (4 energy storage cabinets are equipped with a 800 A switch)
IP Grade	IP55
Weight	≤ 400 kg
Dimensions (W x H x D)	600 x 2500 x 980 (mm)

## Combiner Cabinet for Liquid Cooling ESS Product Parameters

Rated Output Voltage	690 VAC
Rated Output Current	1600 A (6 energy storage cabinets are equipped with a 1600 A switch)
Rated Frequency	50 / 60 Hz
Input Current for Single ESS	156 A
Number of Input Channels	6 channels (6 energy storage cabinets are equipped with a 1600 A switch)
Ip Grade	IP55
Weight	≤ 750 kg
Dimensions (W x H x D)	800 x 2350 x 1350 (mm)

## R&D Investment

(in Millions of USD)

■ R&D Investment  
■ Percentage of Total Sales



Having A Complete Sheet Metal Production Chain — **Sheet Metal Spraying**



Spraying Equipment

Spraying Equipment

Spraying Equipment

Having A Complete Sheet Metal Production Chain — **Production & Assembly**



Charging Pile Assembly Production Workshop

Energy Storage Cabinet Assembly Workshop

PACK Production Line

Having A Complete Sheet Metal Production Chain — **Testing & Inspection**



RoHS Testing Equipment

Salt Spray Testing Machine

Waterproof Test System

Load Testing Machine

Smoke Test Machine

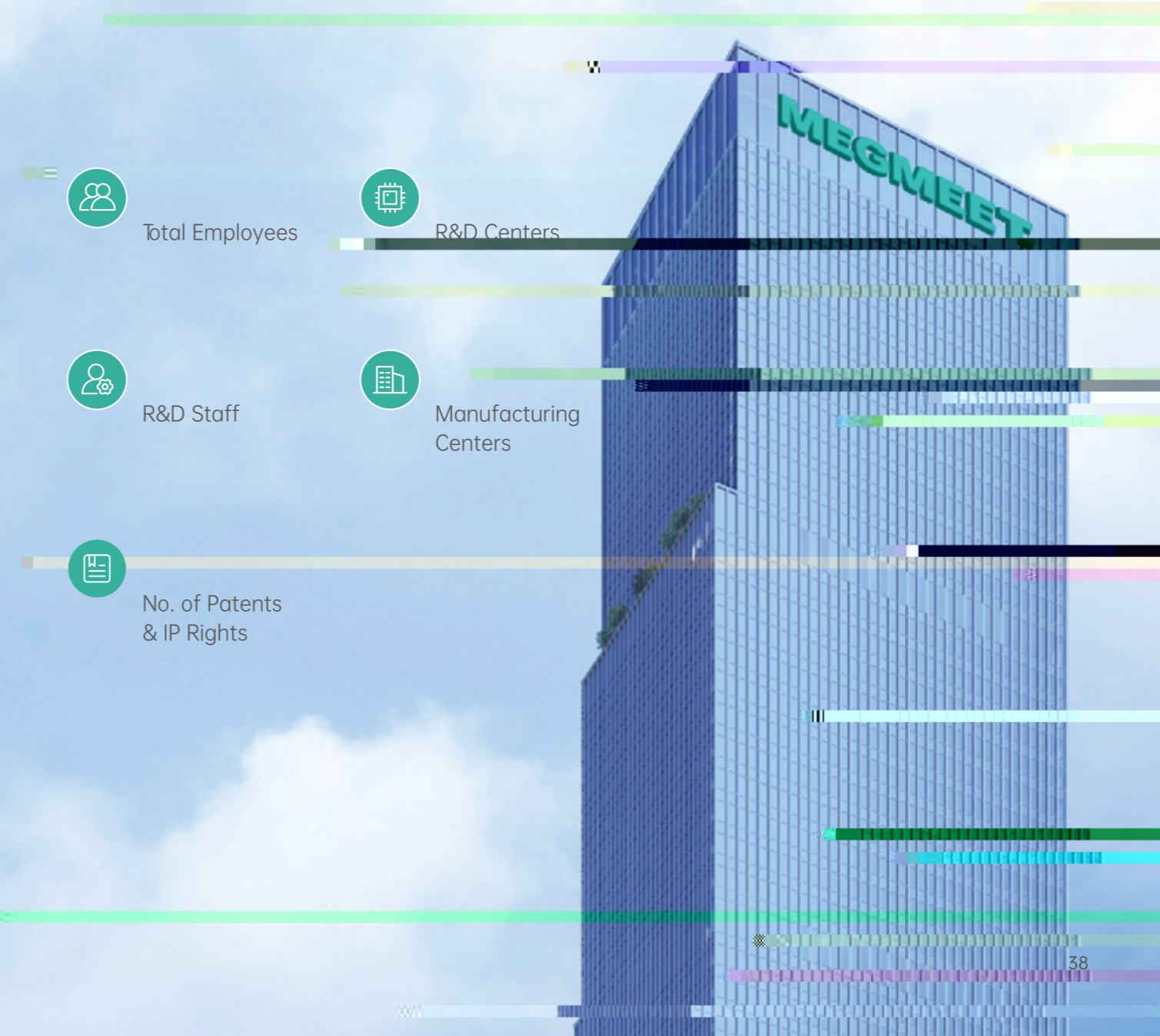
Aging Test Cabinet

~ Ž^ €y V, 8V, , y

MEGMEET is a comprehensive solution provider for hardware and software R&D, production, sales, and service in the field of electrical automation. With power electronics and automation control at its core, MEGMEET's main businesses include Power Solutions, Industrial Automation, eMobility & EV Infrastructure, Intelligent Equipment, Home Appliance Control Solutions, and Precision Connection.

MEGMEET has established a robust R&D, manufacturing, marketing, and service platform, with over 8,400 employees, including more than 3,000 R&D staff worldwide. MEGMEET's global presence includes R&D Centers in China, the United States, and Germany; Manufacturing Centers in Thailand, India, the United States, and China; and Regional Offices across North America, South America, Europe, Central Asia, Northeast Asia, Southeast Asia, India, the Middle East, Oceania, and Africa.

MEGMEET is committed to creating a cleaner living environment for all human beings through more efficient energy utilization and improved manufacturing efficiency. MEGMEET aims to become the world leader in electrical automation and achieve the goal of MEGMEET EVERYWHERE.



ODM

OEM



System Components  
Supplier



Mass Customization  
Source Factory



One-Stop  
Solution